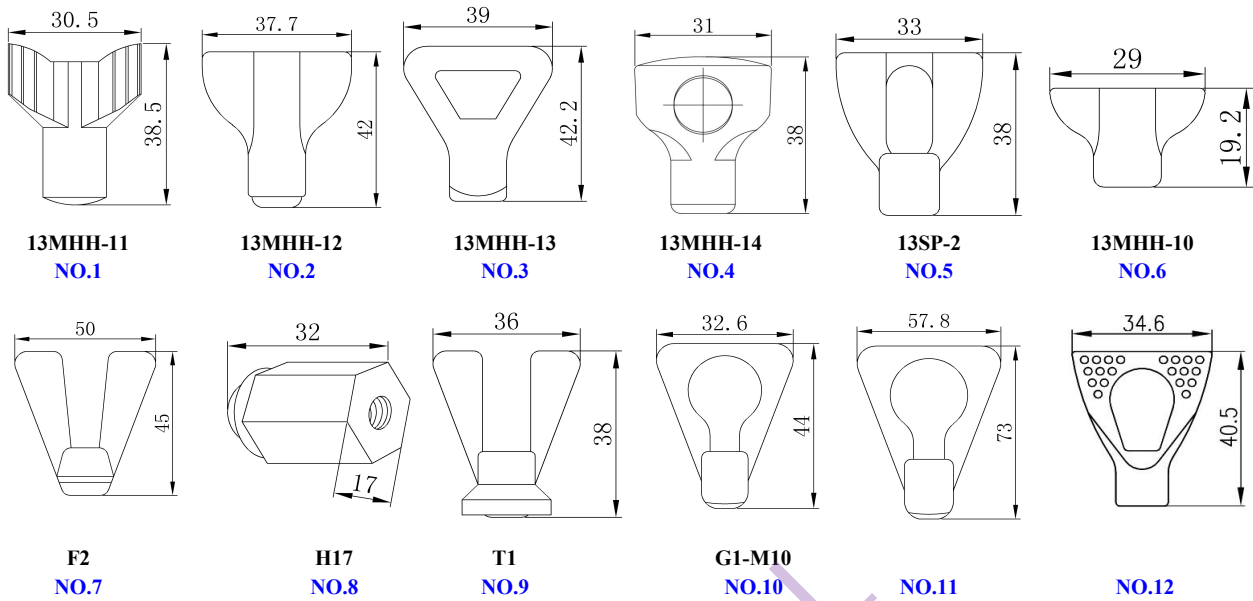
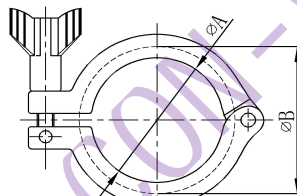


Drawings of Clamps (Measures:mm)



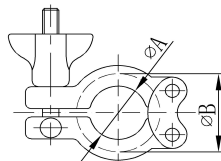
13MHH Heavy duty single pin clamp
13MHH重型单铆钉卡箍



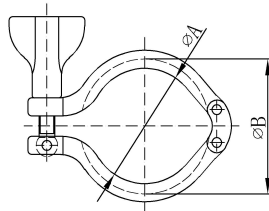
SIZE	A	B
1/2"-3/4"	20	28
A37	27.8	37
1"-1 1/2"	44.4	53.6
2.0"	57.8	67
2 1/2"	71.4	80.6
3.0"	84	94.2
3 1/2"	98.6	109.2
4.0"	110	122.2
4 1/2"	123	133.2
5"	137.4	151
6.0"	155.4	170.4
8.0"	205	220

13MHHM Heavy duty double pin clamp
13MHHM重型双铆钉卡箍

Size:1/2"-3/4",A37

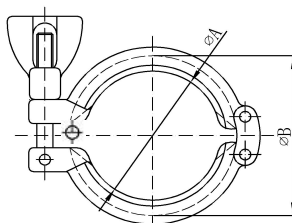


Size:1.5"-8"



SIZE	A	B
1/2"-3/4"	20	28
A37	27.8	37
1.5"	43.6	53.6
2.0"	57	67
2.5"	70.6	80.6
3.0"	84	94
4.0"	112	122
6.0"	155	170
8.0"	205	220.8

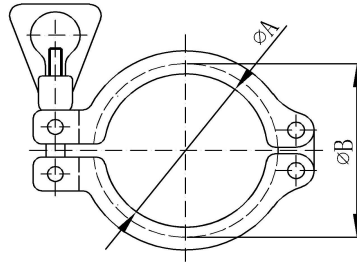
13SF Heavy duty double pin clamp
13SF重型双铆钉卡箍



SIZE	A	B
1"-1.5"	45	58.6
2.0"	59	72
2.5"	67	84
3.0"	85	98
4.0"	114	127

13CS Double pin clamp

13CS双柳钉卡箍

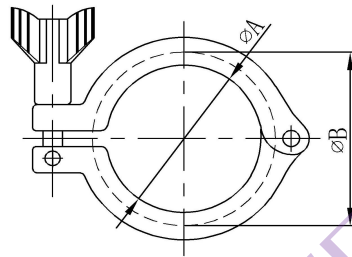


SIZE	A	B
1/2"-3/4"	20.5	28.3
DN10-20	27.2	37
1"-1.5"	41.0	53.5
DN25-40	44.5	54.5
2.0"	54.5	67.0
DN50	57	68
2.5"	68.0	80.5
3.0"	81.5	94.0
DN65	84	95
DN80	99	110

SIZE	A	B
4.0"	109.5	122.0
DN100	112	123
DN115	123	134
DN125	144	159
6.0"	157.6	175.1
DN150	172	187
8.0"	207.4	225.9
DN200	222.5	237.5
DN250	257	272
DN300	308	323

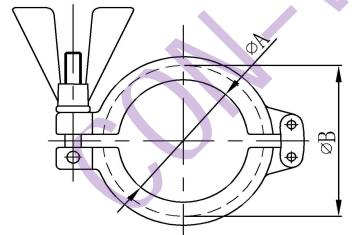
13IS I-LINE Clamp

13IS I-LINE卡箍



SIZE	A	B
1"-1.5"	53.4	83.8
2.0"	72.2	111
2.5"	88.1	121.4
3.0"	102.4	136.1
4.0"	127.8	162
6.0"	195.3	242.1

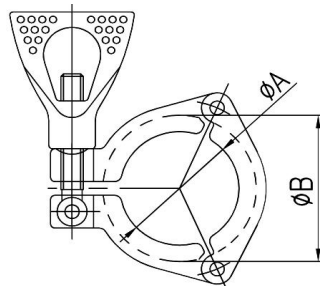
13EU CLAMP



SIZE	A	B
DN10-DN20	27.8	37
DN25-DN40	44.4	53.6
DN50	57.8	67
DN65	71.4	80.6
DN80	84	94.2
DN100	99	109.2
DN115	123	133.2

13MHHS 3 Pieces clamp

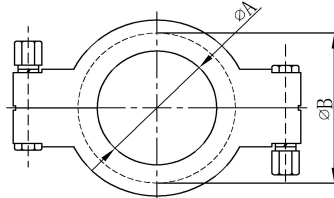
3片式卡箍



SIZE	A	B
1"-1.5"	41.5	53.5
2.0"	54.5	66.5
2.5"	68.5	80.5
3.0"	82	94
4.0"	110	122

13MHP High pressure clamp with screw bolt brass nut

13MHP高压卡箍



SIZE	A	B
1/2"-3/4"	20	28
1"-1.5"	43.3	52.0
2.0"	56.4	65.5
2.5"	69.5	79.0
3.0"	77.5	92.5
4.0"	108.8	120.5
6.0"	158	170
10"	258	272.8
12"	309	327.6