

CANG ZHOU CHANGYUAN FITTINGS CO.,LTD

No.26 Shigang Road,Development Zone,Cangzhou,Hebei,China 061000 E-mail: con-well@vip.163.com

MACON UNIONS (Measures:mm)

Macon Welding Male

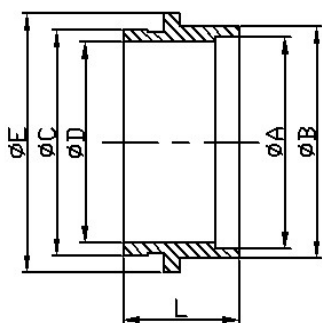
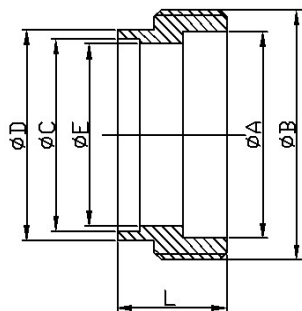
Size	A	B	C	D	E	L
33	32	40.5X11 TPI	33.3	36.3	30	22
38	45	M55*3.0	38.2	46	35.9	30
43	45	M55*3.0	43.3	46.3	40	22
51	55	M67*3.0	51.2	56	48.5	30
53	55	M67*3.0	53.3	56.3	50	22
63	66	M79*3.5	63.3	66.3	60	22
73	76	M90*3.5	73.3	76.3	70	22
76	76	M90*3.5	72	76	70	22
83	86	M102*4.0	83.3	86.3	80	22
103	106	M125*4.0	104.2	108	100	22

Material :304, 316 ,316L

Macon Welding Liner

Size	A	B	C	D	E	L
33	33.3	36	31.5	28	38	22
38	38.2	46	44.5	35.9	50	29
40/43	43.3	46.3	44.5	40	50	22
50/53	53.3	56.3	54.5	50	62.5	22
51	51.2	56	54.5	48.5	62.5	29
60/63	63.3	66.3	64.5	60	73.5	22
70/73	73.3	76.3	74.5	70	85	22
76	72	76	74.5	70	85	22
80/83	83.3	86.3	84.5	80	96	22
103	104.2	108	104.5	100	119	22
40/43	40=D	46.3	44.5	40	50	29
50/53	50=D	56.3	54.5	50	62.5	29
60/63	60=D	66.3	64.5	60	73.5	29
70/73	70=D	76.3	74.5	70	85	29

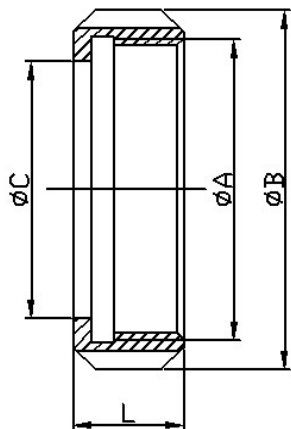
Material :304, 316 ,316L



CANG ZHOU CHANGYUAN FITTINGS CO.,LTD

No.26 Shigang Road,Development Zone,Cangzhou,Hebei,China 061000 E-mail: con-well@vip.163.com

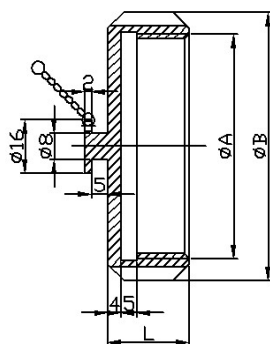
MACON UNIONS (Measures:mm)



Macon Round Nut

Size	A	B	C	L
33	39X11 TPI	50	37	25
43	M55*3.0	70	47	25
53	M67*3.0	80	57	25
63	M79*3.5	95	67	25
73	M90*3.5	106	77	25
83	M102*4.0	118	90	25
103	M125*4.0	139	112	26

Material :304, 316 ,316L



Macon Blind Round Nut

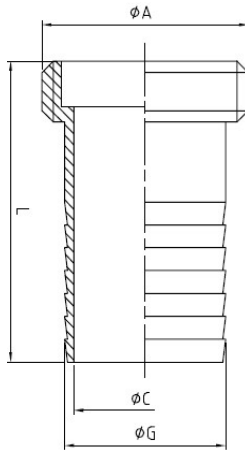
Size	A	B	L
33	39X11 TPI	50	25
43	M55*3.0	70	25
53	M67*3.0	80	25
63	M79*3.5	95	25
73	M90*3.5	106	25
83	M102*4.0	118	25
103	M125*4.0	139	26

Material :304, 316 ,316L

CANG ZHOU CHANGYUAN FITTINGS CO.,LTD

No.26 Shigang Road,Development Zone,Cangzhou,Hebei,China 061000 E-mail: con-well@vip.163.com

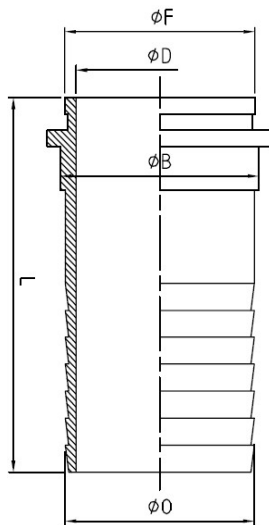
MACON LIGATURE UNIONS (Measures:mm)



Ligature Male

Size	A	C	G	L
43	M55*3.0	38	43	79
53	M67*3.0	48	53	79
63	M79*3.5	58	63	79
73	M90*3.5	68	73	79

Material :304, 316 ,316L



Ligature Liner

Size	B	D	F	L	O
43	46.3	38	44.5	79	43
53	56.3	48	54.5	79	53
63	66.3	58	64.5	79	63
73	76.3	68	74.5	79	73

Material :304, 316 ,316L